

HIP GRIP™ SIZING INSTRUCTIONS

STEP 1: MEASURE PELVIC WIDTH AND CIRCUMFERENCE

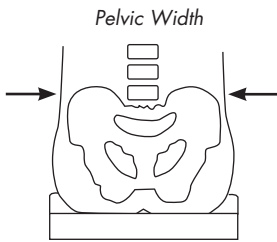


Fig. A

To select the proper pad and belt size, you will need to obtain your user's Pelvic Width and Pelvic Circumference at the Iliac Crest (see Fig. A.) Measure the user while they are seated and include the user's soft tissue in your measurements. Calipers are the most accurate way to measure pelvic width (see Fig. B.) A flexible measuring tape can be used to measure Pelvic Circumference.

Pelvic Width at Iliac Crest (IC) _____ in/cm

Pelvic Circumference at Iliac Crest (IC) _____ in/cm

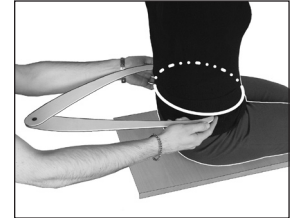


Fig. B

STEP 2: SELECT PAD SET

Using the table below, select the Pad Set that corresponds with your Pelvic Width measurement.

PAD SET	PELVIC WIDTH		
	20-25 cm 7 3/4"-10"	27-32 cm 10 1/2"-12 1/2"	34-39 cm 13 1/2"- 15 1/2"
Small Pad Set (HG2-S)	Small		
Medium Pad Set (HG2-M)		Medium	
Large Pad Set (HG2-L)			Large

STEP 3: SELECT PIVOT MOUNT HIP BELT

Each pad set has the option of working with two belt sizes. Determine the correct pivot mount hip belt by locating your user's Pelvic Width size in the left column and then determining which Hip Belt size the user's Pelvic Circumference measurement falls under.

PELVIC WIDTH	PELVIC CIRCUMFERENCE																							
	56cm	58cm	61cm	64cm	66cm	69cm	71cm	74cm	76cm	79cm	81cm	84cm	86cm	89cm	91cm	94cm	97cm	99cm	102cm	104cm		107cm	109cm	
	22"	23"	24"	25"	26"	27"	28"	29"	30"	31"	32"	33"	34"	35"	36"	37"	38"	39"	40"	41"		42"	43"	
7 3/4" 20cm																							7 3/4" 20cm	
8 1/2" 22cm																								8 1/2" 22cm
9 1/4" 24cm																								9 1/4" 24cm
10" 25cm																								10" 25cm
10 1/2" 27cm																								10 1/2" 27cm
11 1/2" 29cm																								11 1/2" 29cm
12 1/2" 32cm																								12 1/2" 32cm
13 1/2" 34cm																								13 1/2" 34cm
14 1/2" 37cm																								14 1/2" 37cm
15 1/2" 39cm																								15 1/2" 39cm

